



SkyGlider



RODLBERGER
Rides and more

Fa. Alfred Rodlberger Stahl & Maschinenbau GesmbH
Gewerbegebiet 443 A-5721 Piesendorf-AUSTRIA

Fly like a bird!

The SkyGlider has been inspiring its pilots on the mountains of this world **for more than 15 years**. Whether a flight goes through a forest aisle or starts from the snow-covered summit cross, the Sky Glider leaves a lasting impression on families, young and old!

Overview – procedure

4 Persons per Ride

125 cm minimum body size

Procedure

1. Tightening the harness
2. Hook 4 people into Glider
3. Flight with 75 km/h uphill
4. Flight with 85 km/h down the hill!
5. Unhooking and replace harness



Operation with wind
possible until **15m/s**



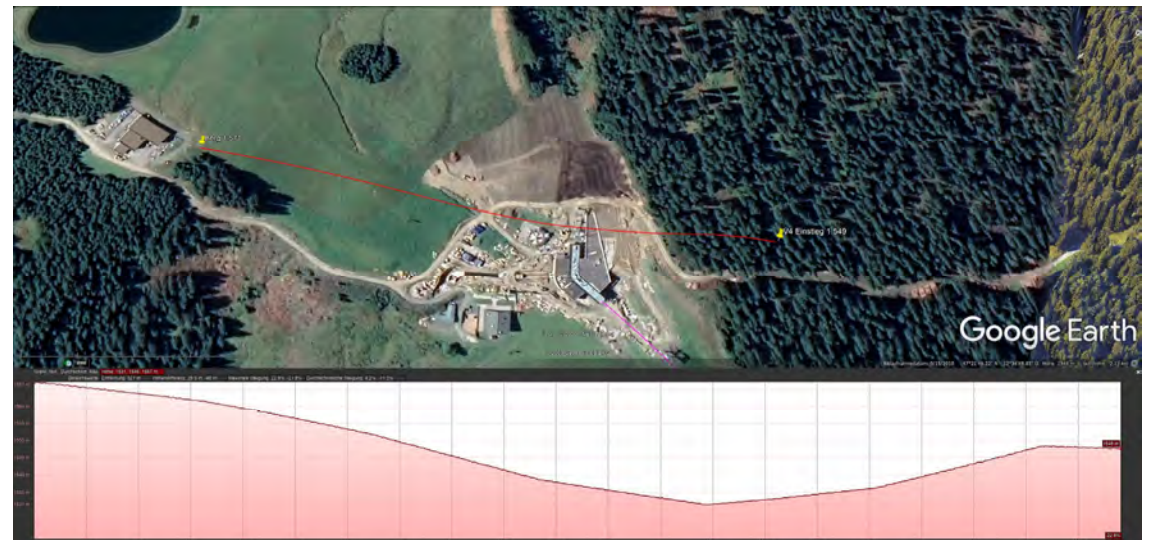
Day and night
- sunshine or
rain or snow
until **-15°C**



TÜV approved
designed and built along
EN 13814

Track finding

- 1 Chose the location of your entrance station
- 2 Choose the location for top station
- 3 Send us these data by mail (google-earth)
- 4 We do a quick feasibility analysis!



Overview – rope profile

Technical limits in specification:

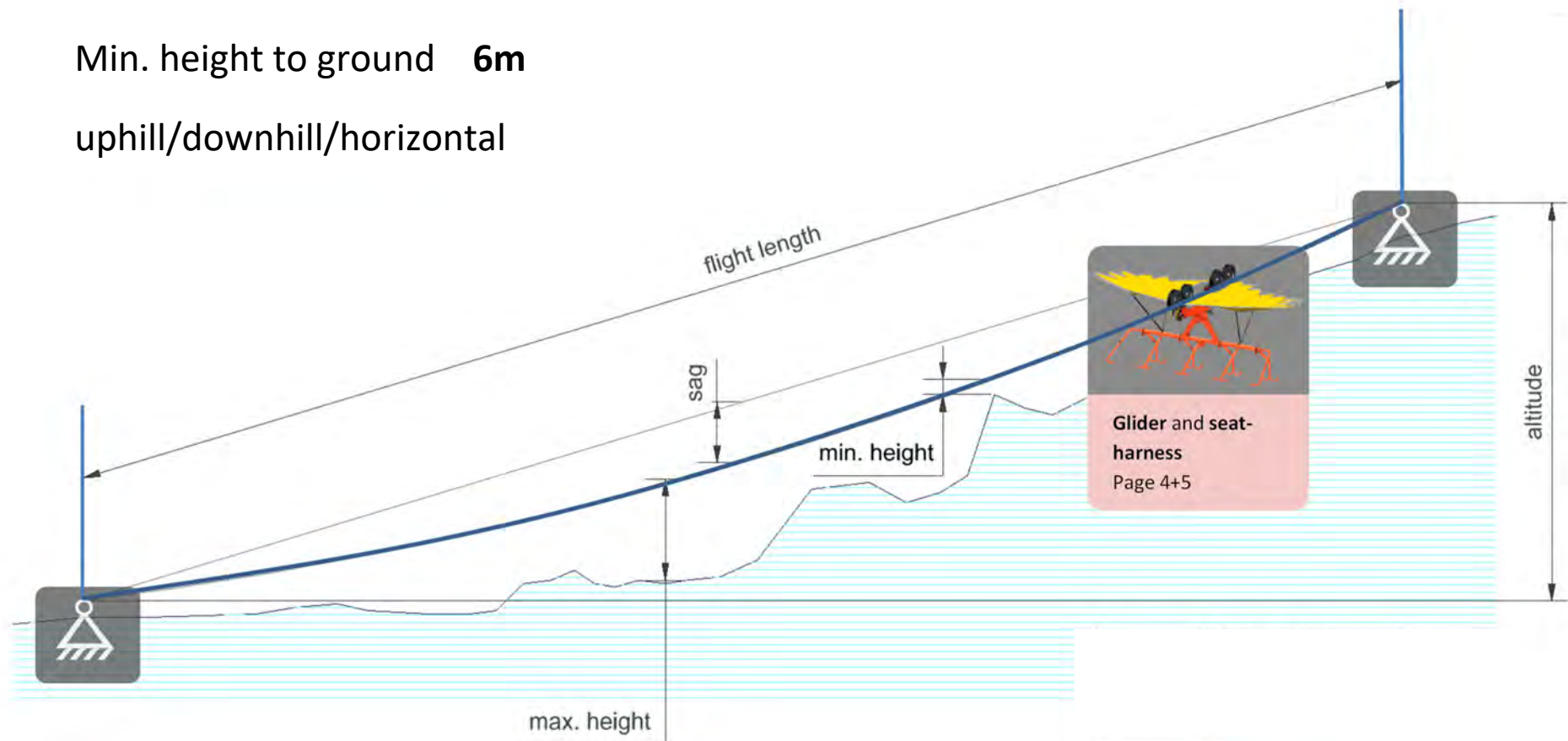
Flight length **450 – 900m**

Altitude **10 – 300m**

Rope- sag **12 – 30m**

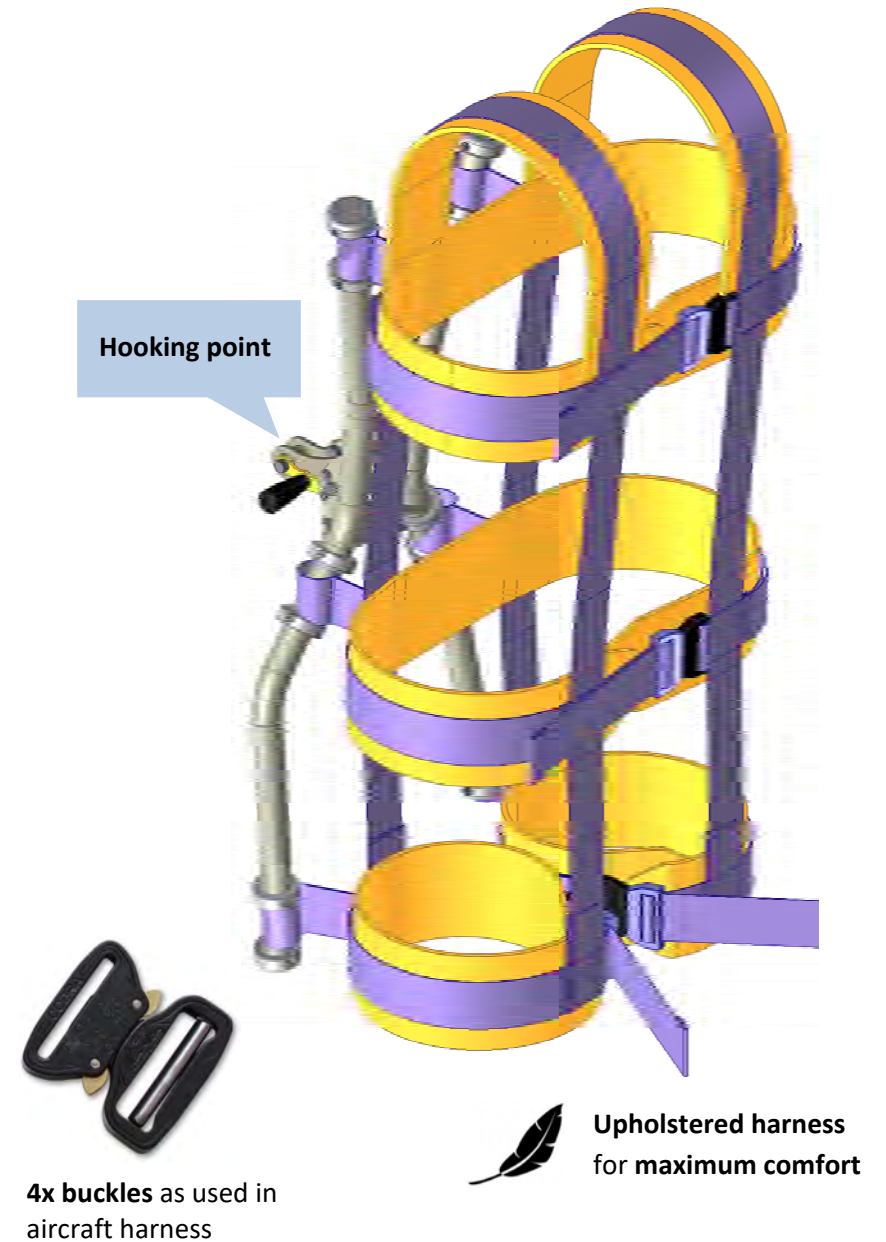
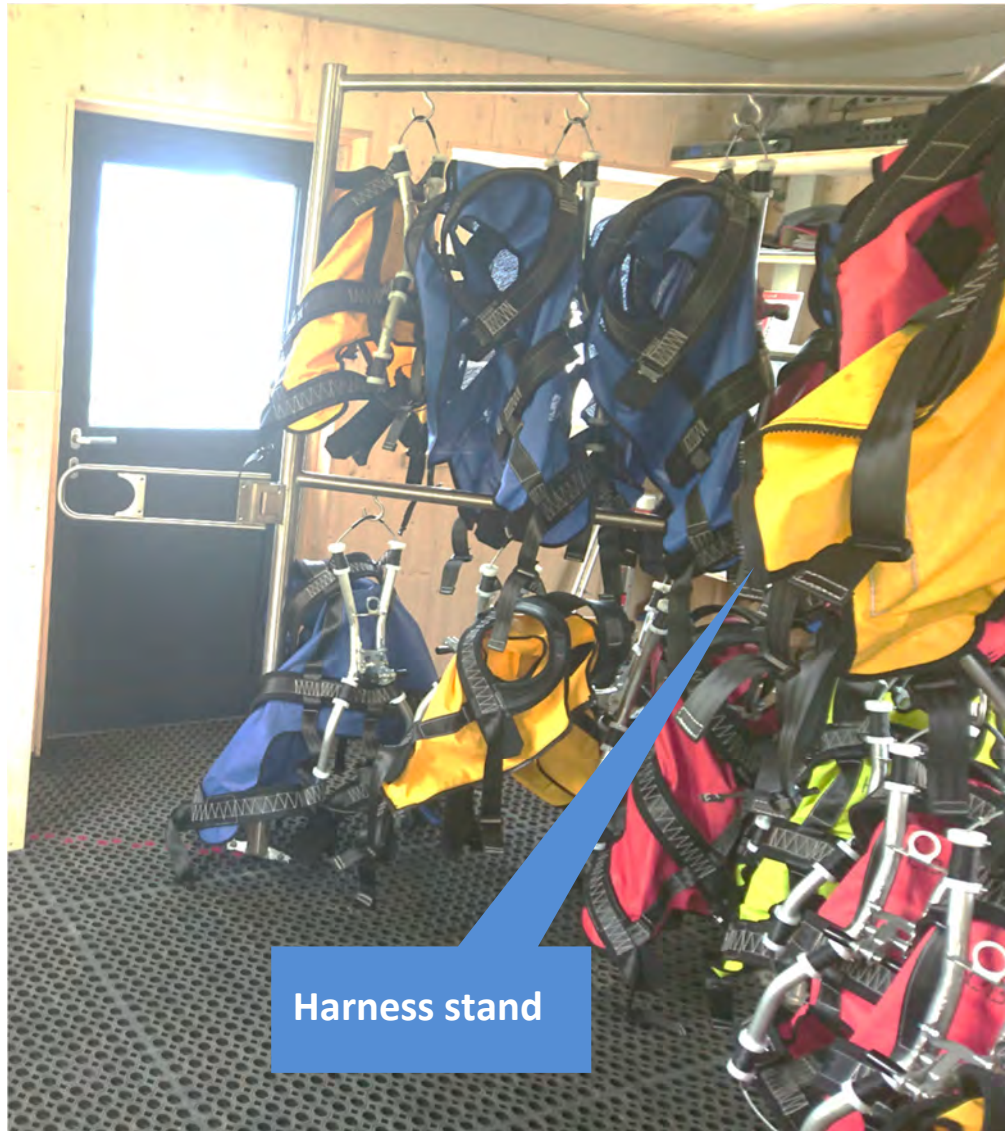
Min. height to ground **6m**

uphill/downhill/horizontal



Harness 4 body sizes **S-M-L-XL**

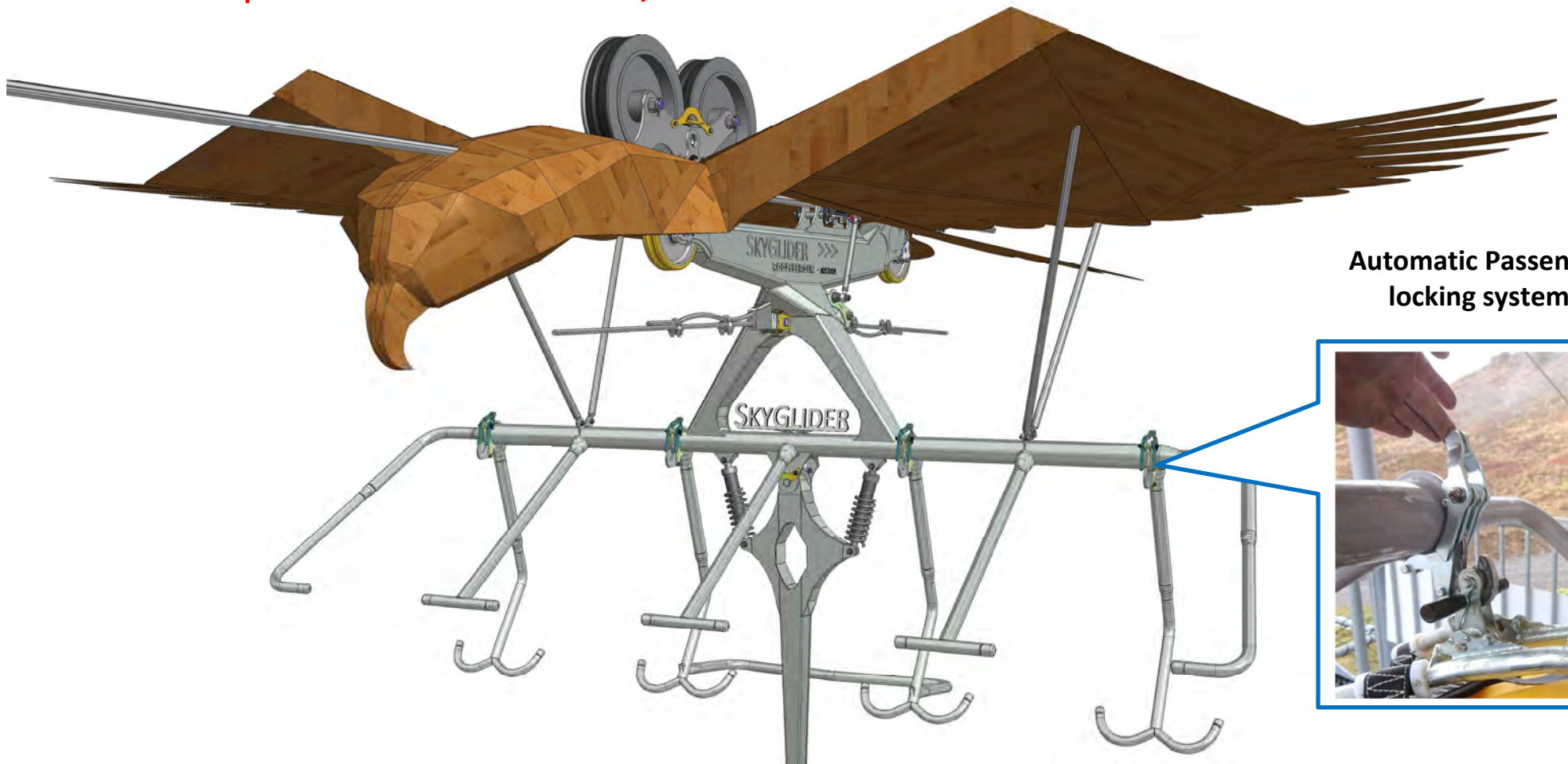
Minimum Size **125 cm**



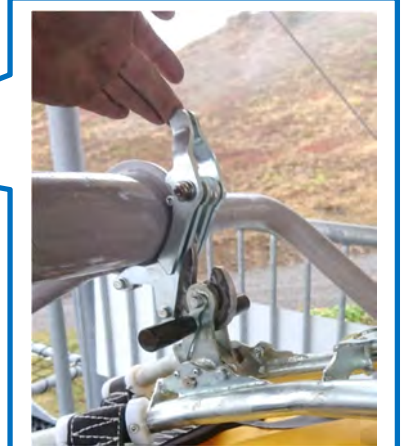
Glider

Glider speed

Up and down motor driven 85 km/h



Automatic Passenger
locking system



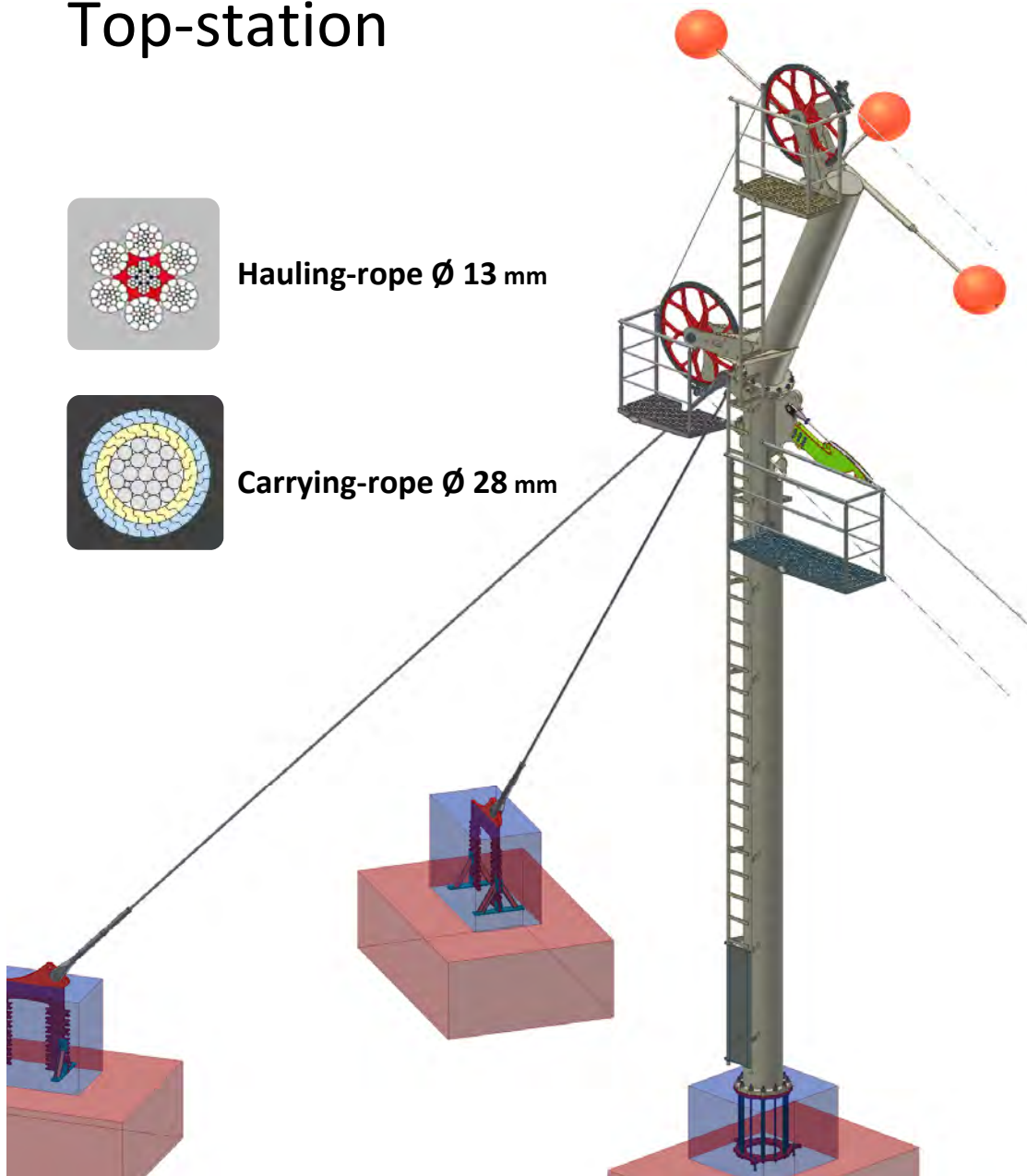
Top-station



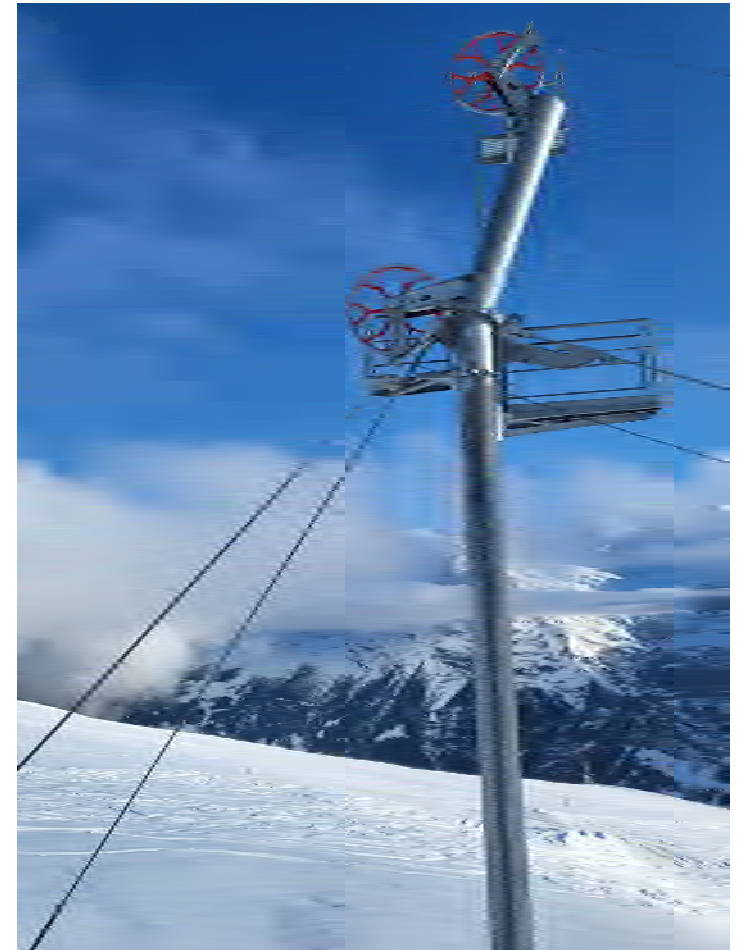
Hauling-rope \varnothing 13 mm



Carrying-rope \varnothing 28 mm

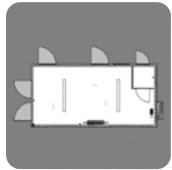


No connection between
top- and bottom-station

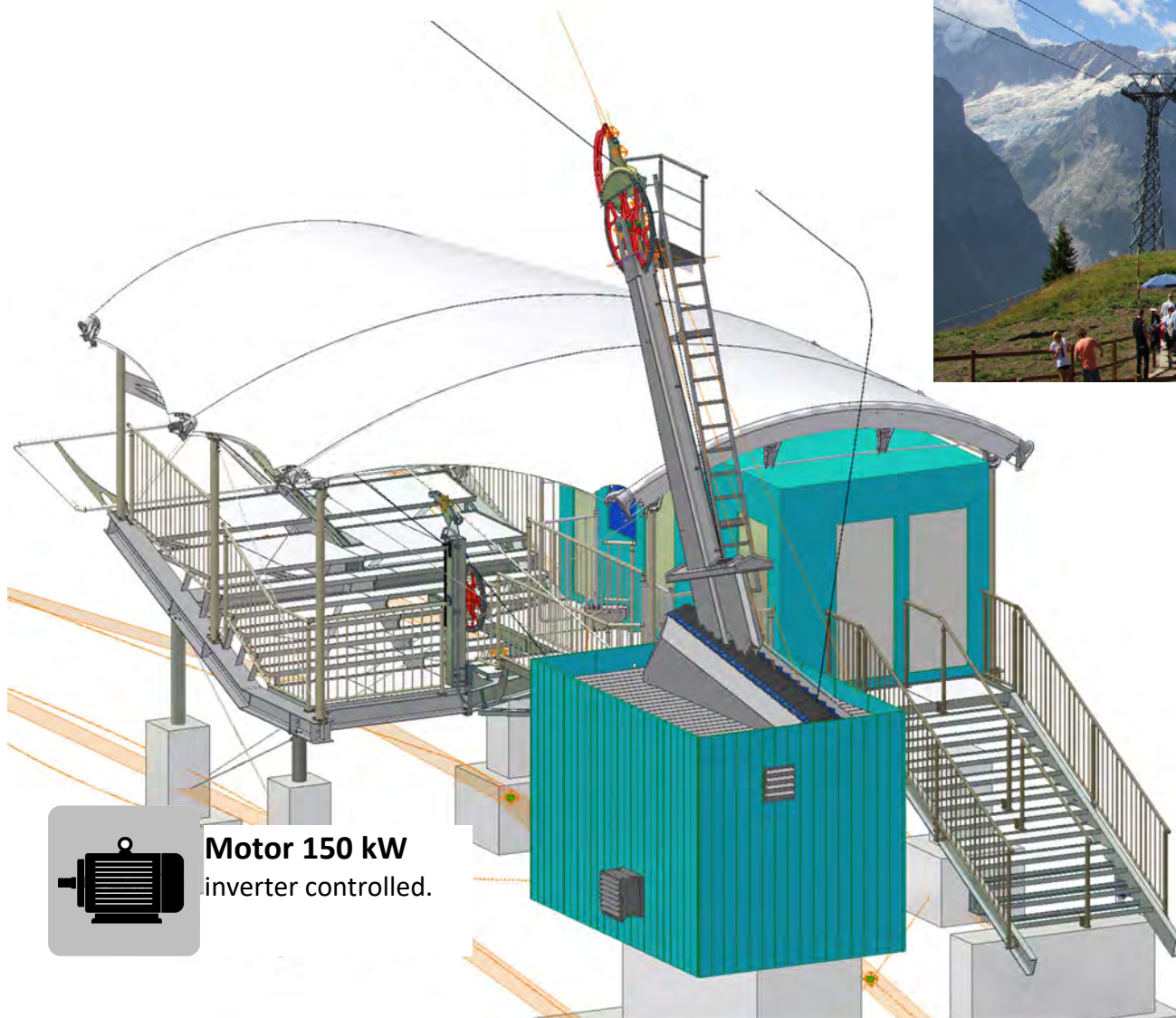


Helicopter Installation possible

Bottom- station



Operator cabin with dressing area and storage room for harness



Motor 150 kW
inverter controlled.



Control unit uses Fale-safe
plc of Pilz©.
Safety PLC-PSS 4000

Fiss – Tirol

FISSER FLIEGER

in Operation since **2006**

Flight length: 680m

Flight altitude: max. 40m

Bottom station 1800 m a.s.l.

Top station 1930 m a.s.l.



Achensee – Tyrol



AIR ROFAN

in Operation since **2007**

Flight length: 550m

max. 56m height to ground

Bottom station 1820 m a.s.l.

Top station 2020 m a.s.l.

Membran roof for up to 650 kg/m² snowload



Korek Mountain – Irak

KOREK FLYER

in Operation since **2010**

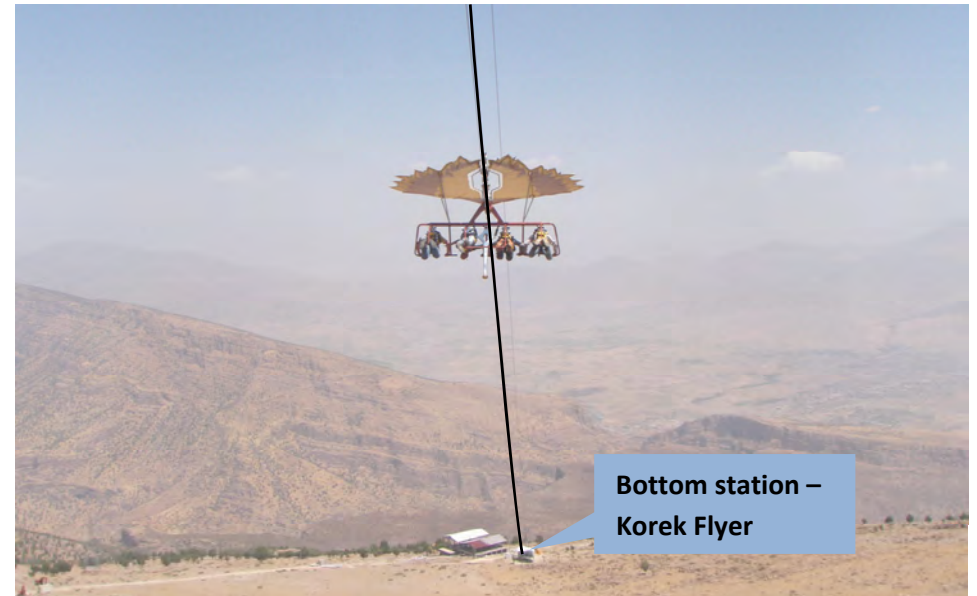
Flight length: 570 m

max. 15m height to ground

Bottom station 1710 m a.s.l.

Top station 1880 m a.s.l.

Temperature up to +45°C



Basilicata – Italy

Il volo dell'Aquila

Operation since **2013**

Flight length: 920 m

max. 40m height to ground

Top station 855 m a.s.l.

Valley station 615 m a.s.l.



Grindelwald -Switzerland

85 km/h Up and Downhill

Entrance building in wood



First Glider

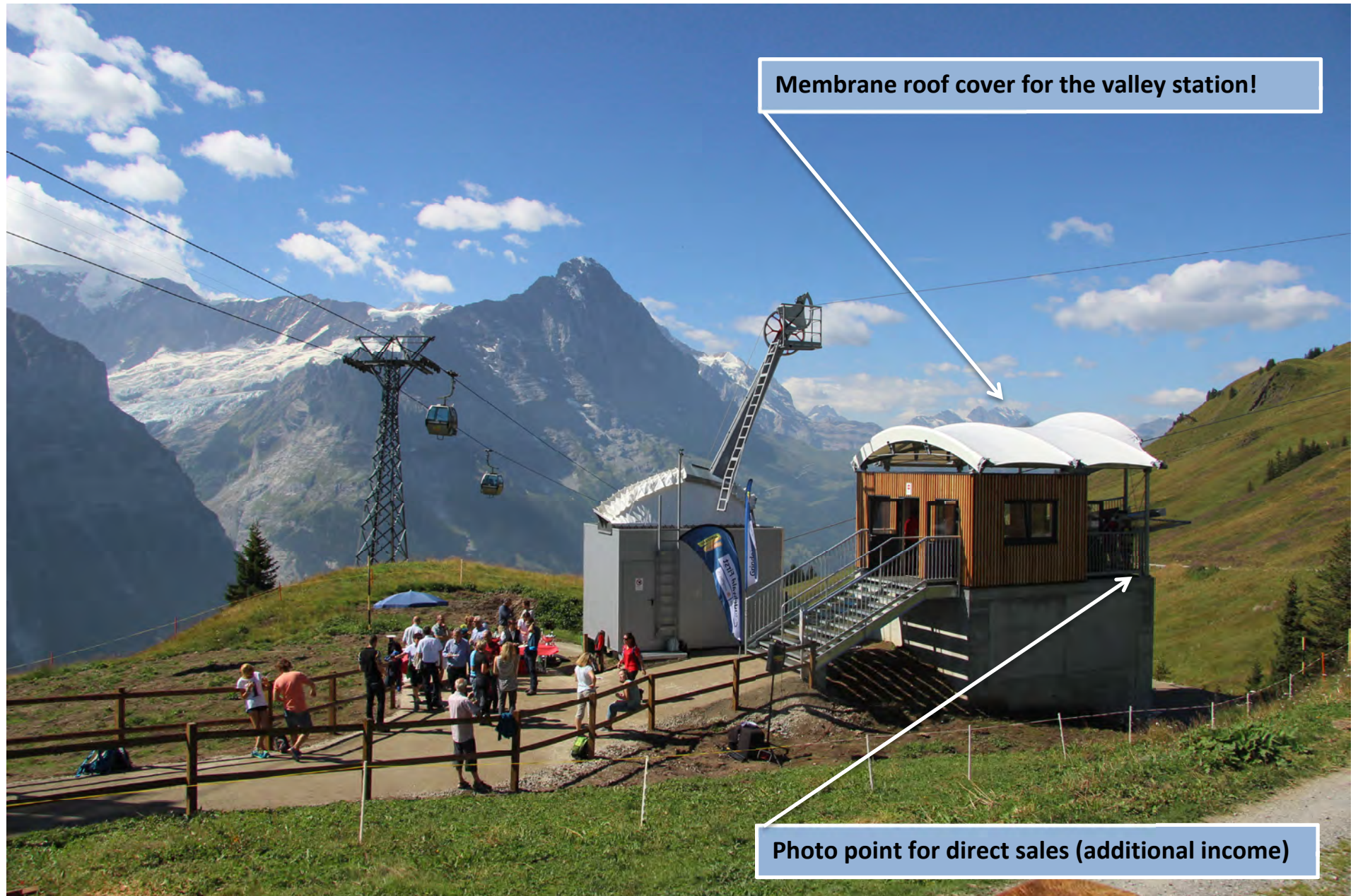


Turnkey projects



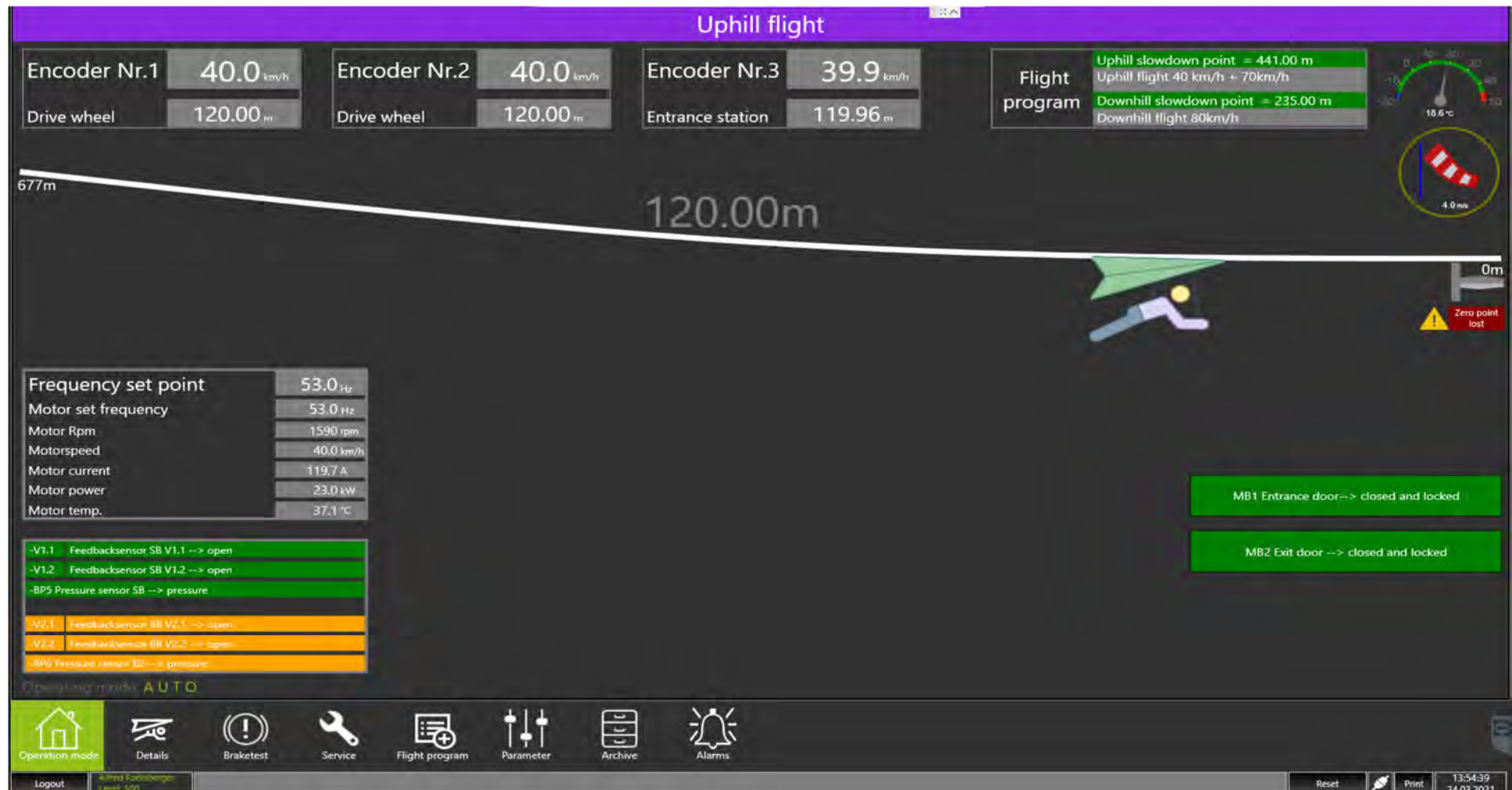
- 1 SkyGlider Track research (Information pages 2+3)
- 2 Offer for individual track
- 3 Submission of the project to the responsible authorities
- 4 Contract with Rodlberger
- 5 Foundations - Assembly - Commissioning - Training - TÜV

Equipments



Touchscreen operation

Get in touch with us info@rodlsberger.at



Interested?

Get in touch with us www.rodlsberger.at

